

# ADORA®

A03.00 DK  
Brugsvejledning

Berøringsfrit håndvaskarmatur med sensor



## Anvendelse

- ADORA® berøringsfri armaturer er produceret med henblik på at forsyne, en vask med koldt drikkevand, varmt vand og blandet vand til husholdning
  - ADORA® berøringsfri armaturer er produceret med henblik på anvendelse i baderum og toiletrum i private boliger, kontorer, institutioner og lignende
- 

## Garanti

- Der ydes 2 års garanti mod dryp og fabrikationsfejl. Garantien dækker reservedele
  - Købskvitteringen er produktets garantibevis. Opbevar denne sammen med denne brugsvejledning
  - Det anbefales, at scanne eller kopiere kvitteringen, da tryksværte kan falme med tiden
- 

## Vedligeholdelse

- Armaturer med forkromede eller farvede overflader og armaturer i rustfrit stål skal aftørres umiddelbart efter brug
  - Luftblanderen skal med jævne mellemrum rengøres eller udskiftes efter behov
  - Armaturer udført i rustfrit stål skal jævnligt overfladebehandles med plejeprodukter specielt til rustfrit stål
  - Rustfrit stål, der ikke vedligeholdes, kan risikere at danne rust
  - Særligt luftblendere af rustfrit stål risikerer at danne rust, hvis de ikke vedligeholdes
  - Filtrene på vandtilslutningen skal rengøres eller evt. udskiftes en gang årligt
- 

## Rengøring

- Anvend kun neutrale rengøringsmidler, der ikke er slibende eller kalkopløsende, og ikke indeholder syre, klor, eller fosfor
  - Ved brug af rengøringsmidler på spray, spray altid først midlet på en klud og påfør derefter med kluden. Ved direkte spray på armaturet er der risiko for at beskadige gummiringe og andre vitale dele
  - Anvend aldrig slibesvampe eller skuresvampe på armaturer
  - Armaturer udført i rustfrit stål skal jævnligt rengøres med rengøringsmidler fremstillet specielt til rustfrit stål
- 

## Montering

ADORA® armaturer skal monteres i en lovlig installation og i henhold til gældende lovgivning i det land armaturet monteres. Opstår der tvivl om korrekt installation, kontakt da en autoriseret VVS-installatør.

Installationens driftstryk skal være mellem 1 og 6 bar. Ved højere driftstryk skal der monteres trykreduktionsventiler på både koldt- og varmtvandstilgang.

Hvis armaturet drypper eller ikke fungerer umiddelbart efter montering:

1. Luk for vandtilførslen, og lad armaturet forblive monteret
2. Se punktet 'Spørgsmål & Svar' i denne vejledning
3. Se mere på [www.adora-design.com](http://www.adora-design.com) eller skriv til: [info@adora-design.com](mailto:info@adora-design.com)

Husk at vedhæfte foto af det installerede produkt, kopi af købskvittering og også evt. installationskvittering.

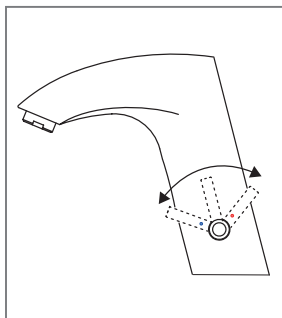
Før montering:

- Pak det nye armatur ud
- Skab overblik over indholdet
- Kontroller at installationen passer til de medfølgende monteringsdele
- Hvis installationen ikke passer til de medfølgende monteringsdele, anskaf da yderligere monteringsdele hos forhandleren
- Kontroller at fastspændingsbolte kan nå igennem vasken/bordpladen
- Klargør det nødvendige værktøj
- Luk for vandtilførslen
- Afmonter det gamle armatur
- Afdæk rør og ventiler for beskyttelse mod snavs under montering

Efter montering:

- Afmonter luftblanderen
- Åbn langsomt for vandtilførslen
- Aktiver sensoren så der kommer vand ud af tuden, drej temperaturgrebet til både kold og varm side
- Monter luftblanderen
- Vælg vandstrømsbegrænser efter behov, eller udelad vandstrømsbegrænser
- Juster eventuelt vandtilførsel på ventilerne
- Kontroller at alle samlinger er tætte
- Gentag samme kontrol efter nogle timer for at sikre en succesfuld montering

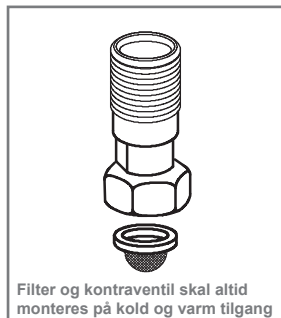
### Temperaturvælger



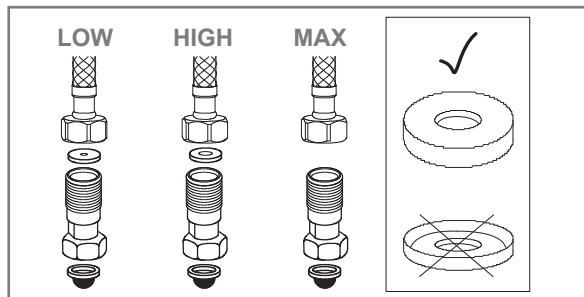
### Servicekappe



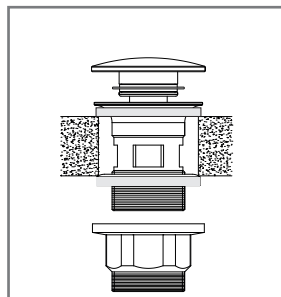
### Filter og kontraventil

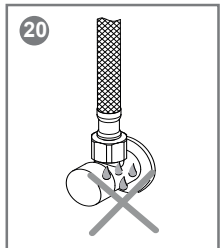
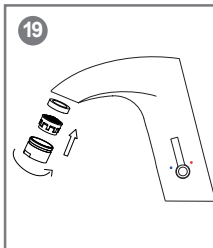
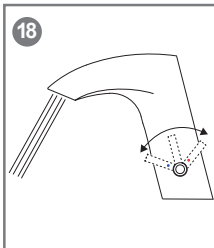
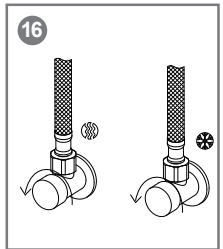
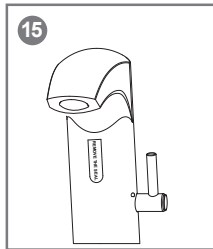
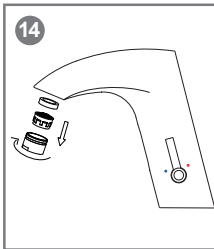
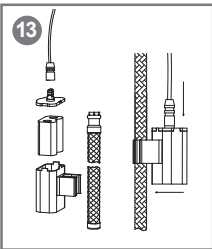
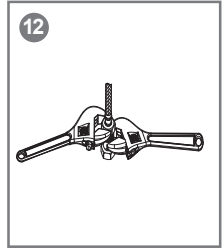
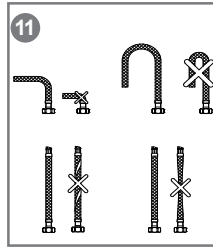
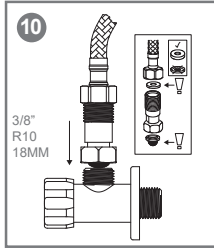
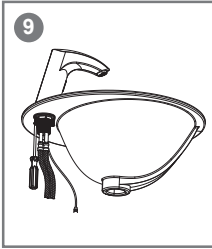
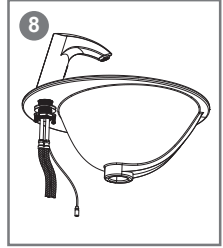
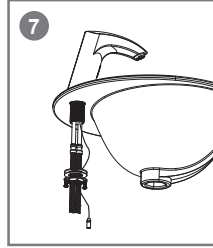
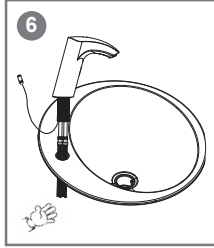
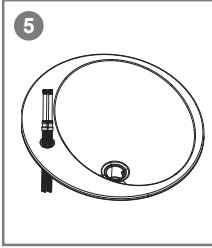
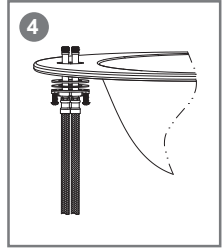
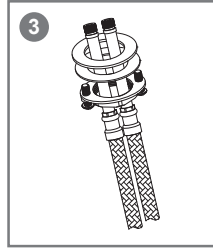
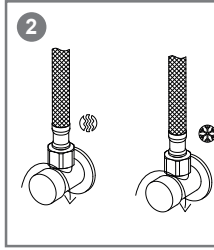
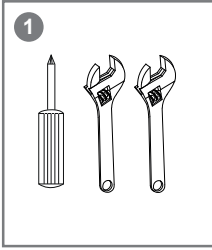


### Vandstrømsbegrænser



### Montering af bundventil



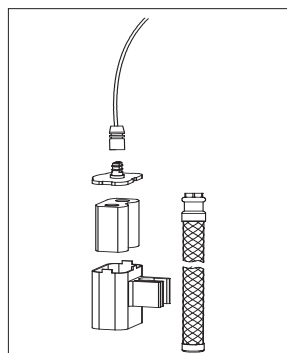


1. Klargør værktøj
2. Luk for vandet
3. Før begge slanger igennem møtrik, skive og pakning
4. Begge slanger føres nedefra og op gennem hanehullet i vasken
5. Hold begge slanger fast oppefra
6. Skru begge slanger op i armaturet - med hånden, bemærk hvad der er koldt og varmt vand, pas på ledningen
7. Før ledningen forsigtigt ned gennem hanehullet og under vasken videre gennem pakning, skive og møtrik
8. Før pakning og skive op på armaturets gevind og med hånden skru møtrik ken helt op til vasken indtil der er modstand mod vaskens underside
9. Efterspænd på skift de to skruer flere gange med skruetrækker indtil armatur sidder godt fast
10. Kontrollér at filterpakningen sidder på plads i omløberen og med hånden skru omløberen på ventilen  
BEMÆRK: Filter og kontraventil skal altid monteres på kold og varm tilgang
11. Vær opmærksom på at slangerne er bøjet på en hensigtsmæssig måde og ikke er snoet
12. Brug to skiftenøgler til at spænde omløberen fast på ventilen. Hold kontra på kontra ventilen med den ene og spænd omløberen med den anden  
BEMÆRK: For hård fastspænding vil skade filterpakningen
13. Sæt stikket fra armaturledningen fast på batteriet. Husk at sikre at stikkene er fri for snavs. Pust eventuelt i stikket, inden samling. Placer batteriholderen på én af armaturslangerne, hvor den er let at komme til
14. Skru luftblanderen af
15. Fjern beskyttelsestapen 'REMOVE THE SEAL'
16. Åbn for vandet
17. Aktiver sensoren
18. Skyl armaturet og drej temperaturgrebet til både kold og varm side indtil vandet flyder jævnt.
19. Skru luftblanderen på igen
20. Kontroller alle samlinger

### Udskiftning af batteri:

Når sensoren blinker rødt 1 gang hver fjerde sekund, skal batteriet udskiftes.

- Træk forsigtigt batteriboksen fri af slangen
- Træk låget af sammen med stikket
- Skift batteriet
- Tryk låget fast på batteriboksen
- Pres batteriboksen tilbage på slangen



## Spørgsmål & Svar

Der kommer for lidt vand ud:	Kontrollér om der er snavs i luftblanderen. Skru mere op for vandtilførslen. Udskift vandstrømsregulatoren til en med større gennemløb eller udelad den helt. Kontroller at vandstrømsregulatoren vender rigtigt. Kontrollér om der er snavs i indløbsfilter eller i kontraventil.
Der kommer for meget vand ud:	Skru ned for vandtilførslen. Udskift vandstrømsregulatoren til en med mindre gennemløb.
Vandet løber konstant:	Afbryd strømmen. Vent 10 sekunder. Tilslut strømmen igen.
Sensoren reagerer ikke:	Kontrollér at batteriet er nyt og sidder korrekt monteret i batteriboksen. Skift evt. batteriet. Kontrollér at stikket og batteriboksen, er samlet korrekt og at der er forbindelse, pust evt. i stikket for at fjerne støv. Udskift sensoren (armaturet skal afmonteres).
Sensoren blinker:	Batteriet skal udskiftes.
Sensoren aktiverer sig selv:	Sensoren påvirkes af lys og/eller reflekser fra blanke overflader. Afskærm de reflekterende materialer. Fortsætter problemet udskiftes sensoren (armaturet skal afmonteres).
Armaturet drypper ud ad tuden:	Der er snavs i ventilen. Skru vandtilførsel op på maksimal styrke, fjern evt. vandstrømsregulatoren. Tvangs aktivér sensoren så vandet løber i længere tid, derved skylles snavs ud. Hjælper det ikke efter flere forsøg lukkes for vandet og magnetventilen tages ud og renses, rens også magnetventil filtret og armaturet indvendig (armaturet skal afmonteres).
Der kommer vand ud ved grebet:	Luk for vandet. Skift kartouchen (armaturet skal afmonteres)
Der løber vand ned ad slangerne:	Armaturslangerne er skruet for lidt i, eller O-ringene er beskadiget. Skru slangerne helt i, kun med håndkraft. Udskift O-ringene.
Justering af sensor og efterløb:	Sensorens følsomhed og efterløb er fast indstillet fra fabrik.

## Reserve dele

Reserve delstegninger er tilgængelige på [www.adora-design.com](http://www.adora-design.com)

---

## Tekniske data

- Prøvetryk: 25 bar
  - Driftstryk: 1-6 bar
  - Maks. vandtemperatur: 70 °C
  - Test norm: EN 15091
  - Aktivering: 12-18 cm fra sensoren
  - Max. løbetid 45 sekunder.
  - Intelligent efterløbstid 1,5 sekund efter endt aktivering
  - Sikkerheds sensor: Sensoren aktiveres automatisk hver femte dag
  - Beskyttelsesklasse: IP 67
  - Batteri: 1 stk. Litium CR-P2 6V
- 

## Bortskaffelse



Gældende nationale regler om bortskaffelse og genanvendelse skal overholdes. Må ikke bortskaffes i dagrenovation.

---

## Ansvarsfraskrivelse

Forhandler, distributør og producent kan ikke gøres erstatningspligtig for:

- Fejl, mangler, skader og følgeskader opstår i forbindelse med fejlmontering
  - Skader på grund af kalk og frost
  - Skader på grund af snavs fra vandforsyning
  - Manglende vedligeholdelse
  - Armaturer monteret og anvendt uden at følge brugsvejledningen
  - Unødvendig voldsom behandling, der påfører armaturet skade
- 

## Kontakt

[www.adora-design.com](http://www.adora-design.com) - [info@adora-design.com](mailto:info@adora-design.com)

---





# ADORA®

A03.00 UK  
User manual

Sensitiva II 12831.00  
Touch-free wash basin faucet with sensor



## Intended use

- ADORA® touch-free faucets are manufactured to provide a wash basin with cold drinking water, hot water and mixed water for household purposes
  - ADORA® touch-free faucets are manufactured for use in; bathrooms and toilet rooms in private homes, offices, institutions a.o.
- 

## Guaranty

- A 2-year guaranty is granted against drip and manufacturing defects. The guaranty covers spare parts.
  - The purchase receipt is the product guaranty certificate.
  - Keep the receipt together with the manual.
  - It is recommended to scan or copy the receipt, as printing ink may fade over time.
- 

## Maintenance

- Faucets with chromed or colored surfaces and faucets in stainless steel must be wiped immediately after use
  - Clean the aerator frequently or replace it when needed
  - Stainless steel faucets must be treated frequently with care products made especially for stainless steel.
  - Stainless steel, which is not properly maintained, is likely to grow rust.
  - Especially stainless steel aerators may grow rust if they are not frequently maintained
  - Filters in the water supply shall be cleaned or replaced once a year
- 

## Cleaning

- Use only neutral detergents that are not abrasive or lime-soluble and do not contain acid, chlorine, or phosphorus
  - When using sprayable detergents; always spray the detergent on a cloth first and then apply the cloth to the faucet. Direct spray on the faucet, gives a risk of damaging the rubber rings and other vital parts
  - Never use abrasive vapors or scouring sponges on faucets
  - Stainless steel faucets must be cleaned frequently with detergents made especially for stainless steel
- 

## Installation

ADORA® faucets shall be mounted in a legal installation and in accordance with applicable laws of the country in which the faucet is mounted. If there is any doubt about the correct installation, contact an authorized plumbing installer.

The operating pressure of the installation must be between 1 and 6 bar. At higher operating pressures, pressure reduction valves must be installed on both cold and hot water connections.

If the faucet drips or does not work immediately after installation:

1. Leave the faucet installed and shut off the water supply
2. See the 'Questions & Answers' section in this manual
3. For more information go to [www.adora-design.com](http://www.adora-design.com) or write to: [info@adora-design.com](mailto:info@adora-design.com)

Remember to attach some photos of the installed product. Furthermore, a copy of the purchase receipt and if possible, the installation receipt.

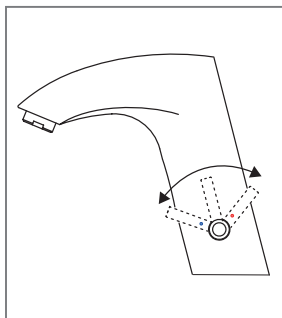
#### Before installation:

- Unpack the new faucet
- Make yourself an overview of the content
- Make sure that the installation is compatible with the supplied mounting parts
- If the installation does not fit together with the supplied mounting parts, obtain additional mounting parts at the dealer
- Check that fixing bolts can reach through the wash basin / tabletop
- Prepare the necessary tools
- Shut off the water supply
- Remove the old faucet
- Cover pipes and valves for protection against dirt during installation

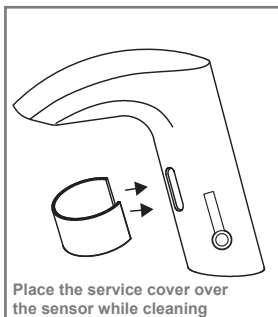
#### After installation:

- Remove the aerator
- Slowly open the water supply
- Activate the sensor; to make sure water is coming out of the spout, first cold and then hot
- Mount the aerator again
- Choose flow restrictor according to the desired need, or leave the restrictor out
- Adjust, if necessary, water flow on the valves.
- Check that all connections are tight, and not leaking
- Repeat the same check again after a few hours to ensure successful assembly

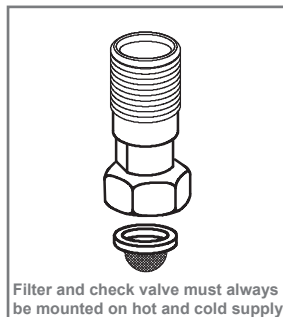
#### Temperature control



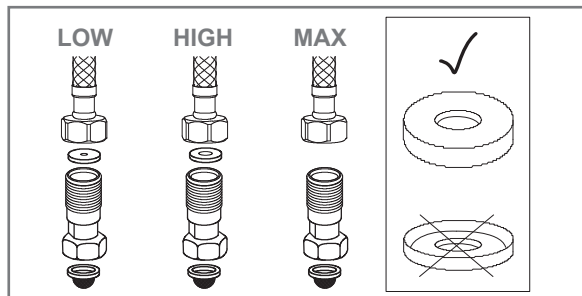
#### Service cover



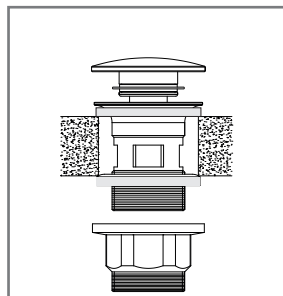
#### Filter and check valve

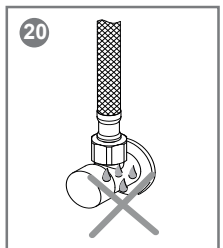
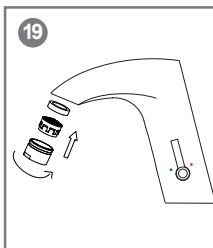
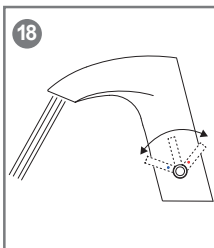
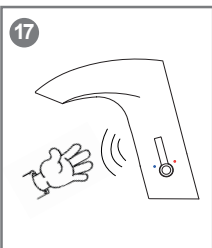
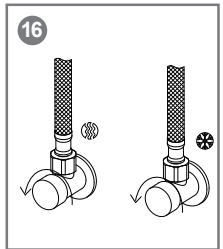
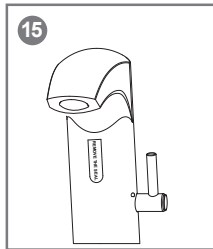
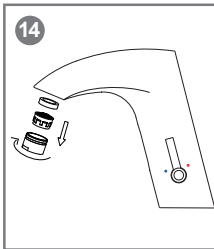
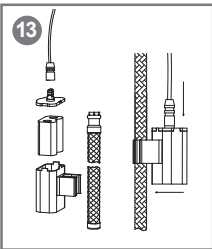
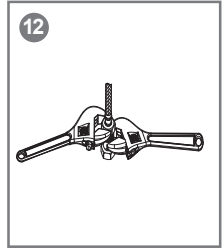
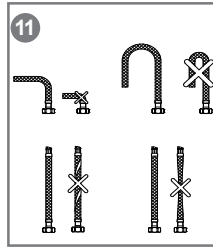
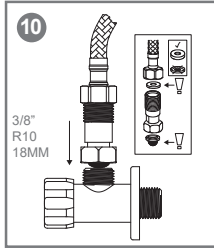
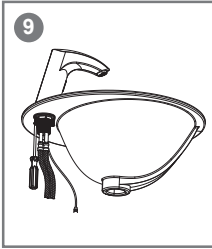
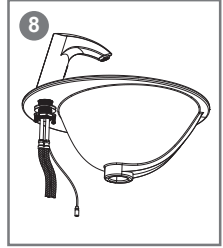
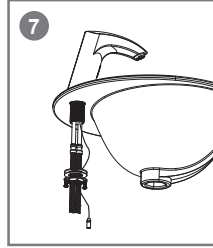
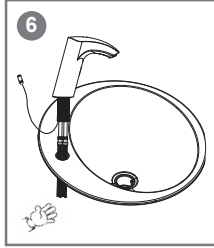
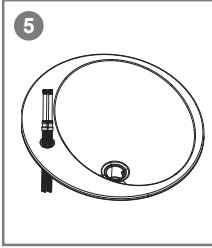
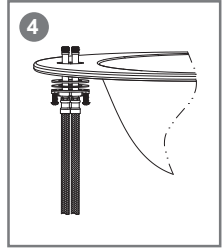
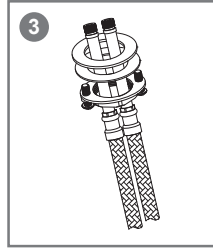
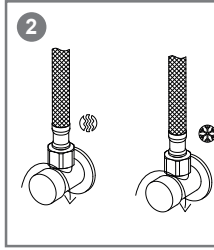
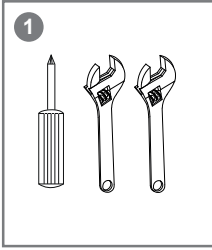


#### Flow restrictor



#### Mounting of waste valve



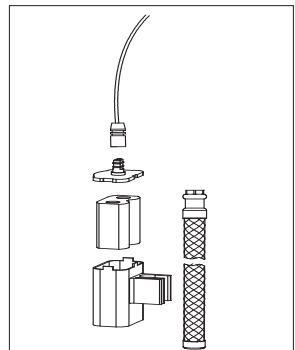


1. Prepare the toole
2. Turn off the water
3. Put the hoses through the nut, washer and gasket
4. Take the hoses from the lower side up through the tap hole in the basin
5. Hold the hoses tight on the upper side of the basin
6. Screw the hoses into the faucet – by hand, mark yourself which is hot and cold. Mind the cord
7. Carefully put the cord down through the tap hole in the basin, and under the basin further through the gasket, washer and the nut
8. Take the gasket and the washer on to the thread of the faucet and by hand screw the nut on to the thread all the way up to the basin until you feel resistance towards the underside of the basin
9. Tighten the two screws exchanging from the one to the other frequently until the faucet is secure fastened
10. Check if the filter gasket is in its place in the nut and screw the nut on to the valve by hand. Caution: Filter and check valve must always be mounted
11. Observe that the hoses are bended in a proper way and not twisted in any way
12. Use two wrenches to tighten the nut on to the valve. Press contra on the check valve with the one and tighten the nut with the other.  
CAUTION: Too hard tightening will damage the filter gasket
13. Connect the plug on the faucet cord to the battery. Remember to make sure that the plugs are free from dirt and dust. Maybe blow into the plugs before assembling. Place the battery box on one of the hoses, where there is an easy access
14. Unscrew the aerator
15. Remove the protection tape 'REMOVE THE SEAL'
16. Turn on the water
17. Aktivite the sensor
18. Flush the faucet and turn the temperature control to hot and cold until the water flows steady
19. Mount the aerator again
20. Check all connections

### Replace battery:

When the sensor flashes red 1 time every four seconds the battery needs to be replaced.

- Carefully pull the battery box off the hose
- Pull the lid and the plug off the battery box
- Replace the battery
- Press the lid and the plug on to the battery box
- Press the battery box on to the hose



## Questions & Answers

- There is too little water:
- Check for dirt in the aerator.
  - Increase the water supply on the valve
  - Replace the flow restrictor into one with higher flow rate, or leave it out
  - Check if the flow restrictor is in correct direction
  - Check for dirt in the filter gasket and in the check valve
- There is too much water:
- Reduce water supply on the valve
  - Replace the flow restrictor into one with lower flow rate
- The water flows constantly:
- Turn off the power, wait 10 seconds, re-connect the power
- The sensor is not responding:
- Check if the battery is new and is properly connected in the battery box. Replace the battery.
  - Check if the plug and the battery box are properly connected and there is connection. Possibly blow in the plug to remove dust.
  - Replace the sensor (the faucet needs to be de-mounted)
- The sensor flashes:
- The battery needs to be replaced
- The sensor activates itself:
- The sensor is disturbed by light and/or reflexes from shiny surfaces. Cover the reflecting materials.
  - If the problem continues; the sensor needs to be replaced (the faucet needs to be de-mounted)
- The faucet drips from the spout:
- There is dirt in the valve.
  - Turn the water supply on to maximum flow, possibly remove any flow restrictor.
  - Force the sensor into activity until the water flows for a longer period of time. This will remove dirt from the valve.
  - If it does not help after numerous repetitions the water supply must be turned off and the soleonid valve must be taken out for cleaning, also clean the filter and the inside of the faucet (the faucet needs to be de-mounted).
- Leakings by the lever:
- Turn off the water supply.
  - Replace the cartridge (the faucet needs to be de-mounted)

Water flows down the hoses:

- The hose fittings are screwed in too little. Screw the hoses fully into the faucet, by hand only.
- O-rings may be damaged, replace O-rings

Adjustment of the sensor and the after-flow:

- The sensitivity of the sensor and the after-flow are fixed from the manufacturer

## Spare parts

Spare parts drawings are available at [www.adora-design.com](http://www.adora-design.com)

---

## Technical data

- Test pressure: 25 bar
- Operating pressure: 1-6 bar
- Max. inlet water temperature: 70 °C
- Test norm: EN 15091
- Aktivating: 12-18 cm from sensor
- Max. flow time 45 seconds.
- Intelligent after-flow time 1,5 sekund after ending activating
- Safety-sensor: Sensor is automatically activated every fifth day
- Protection class: IP 67
- Battery: 1 pcs. Lithium CR-P2 6V

---

## Disposal



Local national regulations on disposal and recycling must be observed.  
Must not be disposed with household waste

---

## Disclaimer

Nor the dealer, distributor or manufacturer can be liable for:

- Faults, defects, damage and consequential damage caused by incorrect installation
- Faults, defects, damage and consequential damage caused by incorrect use
- Damage caused by limestone and frost damage
- Damage due to dirt from the water supply
- Lack of maintenance
- Faucets installed and used without following the user manual
- Unnecessary violent behavior that causes damage to the product

---

## Contact

[www.adora-design.com](http://www.adora-design.com) - [info@adora-design.com](mailto:info@adora-design.com)

---

